



# Net Effect™ Collection

**Interface®**



Net Effect™ Collection

1968年，人类首次从太空拍摄到地球这一蓝色星球的照片，这张照片让我们得以重新看待我们所处的星球，重塑我们与地球的关系。人类突然清晰地意识到，正是我们共同拥有的海洋令我们在宇宙间显得独一无二。

2011年，我们的合作伙伴公司，Aquafil（艾菲而）， 在售予我们的纱线原料中添加了废弃的渔网，从那时起，废弃的渔网便成为我们100%可再生材料尼龙6产品原材料的一部分。去年，我们得以进一步拓展这一设计方案的积极影响。通过Net-Works项目，我们推出了精心设计的Net Effect系列，产品极富海洋元素，风格独具，触感舒适，成为我们向海洋致敬的献礼。

Net-Works项目的实施不仅为菲律宾的小渔村带来额外的收入，同时还有利于海滩和水域的清理，当地废弃的渔网不仅威胁到渔民的生计，还会破坏海岸附近极其珍贵的双层堤礁。英特飞公司将收集来的渔网交给合作伙伴Aquafil（艾菲而）公司将其制成纱线，成为英特飞制作地毯的原料。这一创举有益于创建未来绿色环境，也体现英特飞坚持环保的发展理念。

Net Effect One是一种包含了三种纹理质地的组合地毯（50厘米的方块地毯），图案拼接的整体效果犹如海浪轻拍海岸瞬间的自然景象。浪涌时的动感和色彩为地毯上的每个图案赋予了独特的生命力。在深色调的基调上，B601™拥有比较明晰的纹理结构，明亮的蓝色边缘散发着迷人的光泽。B603™采用一种比较致密的结构，而B602™则是前两者之间的过渡花型。

Net Effect Two共有三款地毯产品，均采用25厘米×1米大小的新型细长条形设计，即使呈线条型排列，也能淋漓展现海水的流动感。B701™、B702™以及B703™产品图案质感略有不同但颜色相同，当它们排列在一起时，可以观察到几种花型过渡之间的细微差别。从八种颜色中取出几种不同的颜色混合起来进行组合，让人联想起光线射入大海中时呈现的复杂而迷人的景象。来自海洋深处的纷繁色彩，阳光，久经日晒盐蚀的木头以及海岸边的礁石，共同绘制成了Net Effect系列的调色板。

一款优雅十足的地面设计方案和一份促进经济积极发展的极具社会责任感的创新环保理念——这就是我们极富积极理念的Net Effect。

First photographed from space in 1968, that image of Earth, the little blue planet, reframed our relationship to our world and to one another forever. Suddenly it was clear that the oceans we all share make us unique in the universe.

Discarded fishing nets have been part of the mix of our 100% recycled content type 6 nylon since 2011 when our partner, Aquafil, began incorporating them into the yarn they sell us. Last year, we saw an opportunity to expand the positive impacts of this design solution. Designed as a tribute, Net Effect honors the ocean not only in its aesthetic references but also in a unique and tangible way through a project called Net-Works.

Net-Works provides a source of income for small fishing villages in the Philippines, while cleaning up their beaches and waters of discarded fishing nets that threaten their livelihood and the very precious double barrier reef off their shore. The collected nets are sold to Aquafil, who, in turn, converts them into yarn for Interface carpet tile – a very bright (blue) idea for a greener future.

Net Effect One is a grouping of three textures in 50 cm squares that, when placed side by side, describes the precise moment when the sea foams into the shore creating organic imagery. Each pattern also has a life of its own as it floods the floor with movement and color. B601™ has a more pronounced texture with shimmering lighter ends on top of deeper tones. B603™ takes a deep dive into a more dense construction and B602™ is the transition between the two.

Net Effect Two includes three products in our new 25 cm x 1 m skinny plank format that captures the fluidity of water even in linear patterns with expanding and contracting rhythms. Discover the nuance of transitions when the three different textures – B701™, B702™ and B703™ – are set side by side in the same color. Or reimagine the complexity of light moving through water by mingling several of the eight colors into one composition. The shared palette was drawn from the deepest parts of the ocean to the sun and salt bleached wood and stones of the shore.

An elegant design solution for the floor and a socially responsible design solution for a fragile economy – that’s a very positive Net Effect.











## B601™ Colorline



7414-001-000 Black Sea



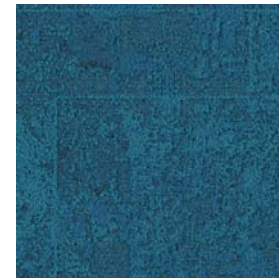
7414-002-000 North Sea



7414-003-000 Pacific



7414-004-000 Arctic



7414-005-000 Atlantic



7414-006-000 Caspian



7414-007-000 Sand



7414-008-000 Driftwood





B602™ Colorline



7416-001-000 Black Sea



7416-002-000 North Sea



7416-003-000 Pacific



7416-004-000 Arctic



7416-005-000 Atlantic



7416-006-000 Caspian



7416-007-000 Sand



7416-008-000 Driftwood





## B603™ Colorline



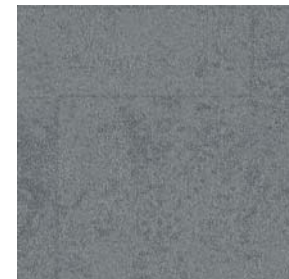
7418-001-000 Black Sea



7418-002-000 North Sea



7418-003-000 Pacific



7418-004-000 Arctic



7418-005-000 Atlantic



7418-006-000 Caspian



7418-007-000 Sand



7418-008-000 Driftwood





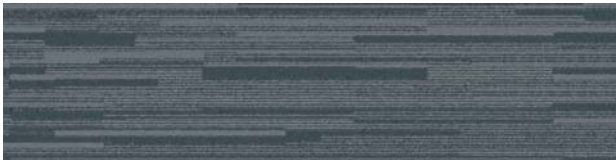




B701™ Colorline



7431-001-000 Black Sea



7431-002-000 North Sea



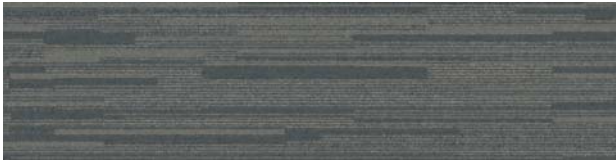
7431-003-000 Pacific



7431-004-000 Arctic



7431-005-000 Atlantic



7431-006-000 Caspian



7431-007-000 Sand



7431-008-000 Driftwood

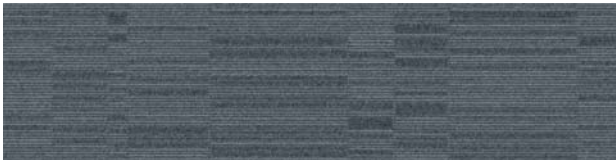




B702™ Colorline



7432-001-000 Black Sea



7432-002-000 North Sea



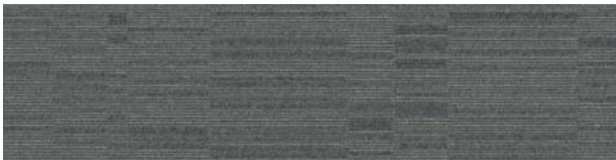
7432-003-000 Pacific



7432-004-000 Arctic



7432-005-000 Atlantic



7432-006-000 Caspian



7432-007-000 Sand



7432-008-000 Driftwood

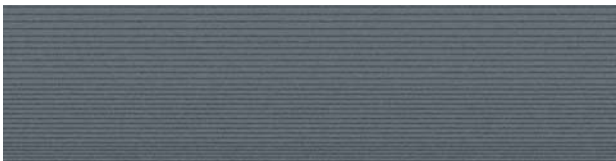




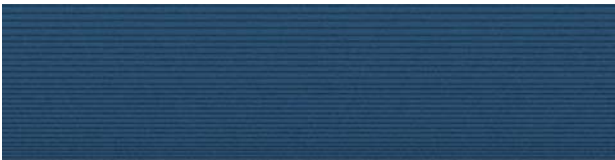
B703™ Colorline



7434-001-000 Black Sea



7434-002-000 North Sea



7434-003-000 Pacific



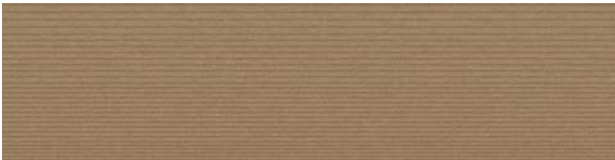
7434-004-000 Arctic



7434-005-000 Atlantic



7434-006-000 Caspian

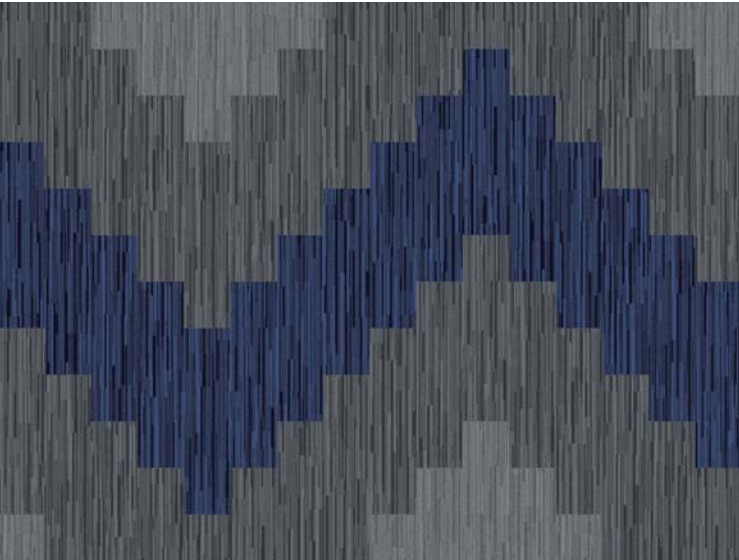


7434-007-000 Sand

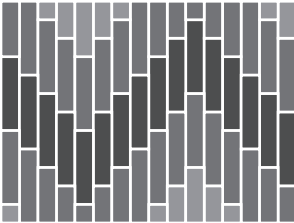


7434-008-000 Driftwood





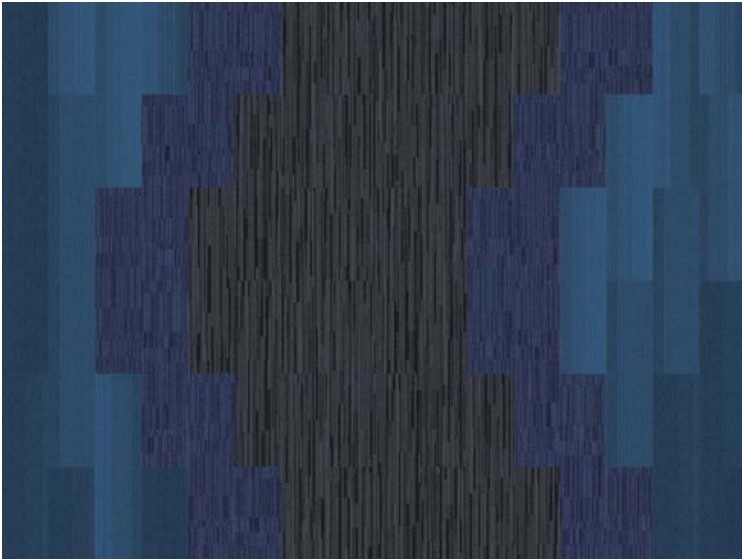
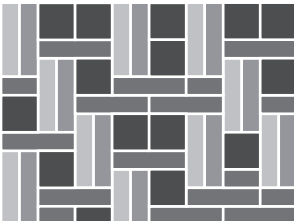
- PRODUCT B701 COLOR 102889 NORTH SEA
- PRODUCT B701 COLOR 102890 PACIFIC
- PRODUCT B701 COLOR 102891 ARCTIC



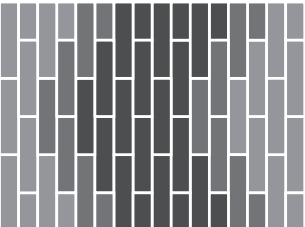
- PRODUCT B601 COLOR 102908 ATLANTIC
- PRODUCT B601 COLOR 102911 DRIFTWOOD
- PRODUCT B603 COLOR 102922 PACIFIC
- PRODUCT B702 COLOR 102897 NORTH SEA
- PRODUCT B703 COLOR 103963 PACIFIC
- PRODUCT B703 COLOR 103965 ATLANTIC
- PRODUCT B703 COLOR 103968 DRIFTWOOD



- PRODUCT B603 COLOR 102922 PACIFIC
- PRODUCT B701 COLOR 102888 BLACK SEA
- PRODUCT B702 COLOR 102896 BLACK SEA
- PRODUCT B703 COLOR 103961 BLACK SEA



- PRODUCT B701 COLOR 102888 BLACK SEA
- PRODUCT B702 COLOR 102898 PACIFIC
- PRODUCT B703 COLOR 103965 ATLANTIC





Specifications

B601™

Style Code	7414 Pattern 000
Product Definition	Tufted Textured Loop
Yarn/Fibre	100% Non-virgin Type 6 Nylon
Colour System	100% Solution Dyed
Machine Gauge	1/10
Pile Thickness	5.0mm +/- 0.5mm
Total Thickness	9.0mm +/- 0.5mm
Tile Size	50cm x 50cm
Area of Use	Commercial – General Duty
Lifetime Antimicrobial	Intersept®
Soil/Stain Protection	Protekt <sup>2</sup> ®
Total Recycled Content	GlasBac® 65% to 70% recycled content GlasBac®RE 80% to 85% recycled content
Installation Methods	Non-directional



Non-directional

B602™

Style Code	7416 Pattern 000
Product Definition	Tufted Textured Loop
Yarn/Fibre	100% Non-virgin Type 6 Nylon
Colour System	100% Solution Dyed
Machine Gauge	1/10
Pile Thickness	4.0mm +/- 0.5mm
Total Thickness	8.5mm +/- 0.5mm
Tile Size	50cm x 50cm
Area of Use	Commercial – General Duty
Lifetime Antimicrobial	Intersept®
Soil/Stain Protection	Protekt <sup>2</sup> ®
Total Recycled Content	GlasBac® 65% to 70% recycled content GlasBac®RE 80% to 85% recycled content
Installation Methods	Non-directional



Non-directional

B603™

Style Code	7418 Pattern 000
Product Definition	Tufted Textured Loop
Yarn/Fibre	100% Non-virgin Type 6 Nylon
Colour System	100% Solution Dyed
Machine Gauge	1/10
Pile Thickness	3.0mm +/- 0.5mm
Total Thickness	7.0mm +/- 0.5mm
Tile Size	50cm x 50cm
Area of Use	Commercial – Heavy Duty
Lifetime Antimicrobial	Intersept®
Soil/Stain Protection	Protekt <sup>2</sup> ®
Total Recycled Content	GlasBac® 65% to 70% recycled content GlasBac®RE 80% to 85% recycled content
Installation Methods	Non-directional



Non-directional

Specifications

B701™

Style Code	7431 Pattern 000
Product Definition	Tufted Textured Tip Sheared Loop
Yarn/Fibre	100% Non-virgin Type 6 Nylon
Colour System	100% Solution Dyed
Machine Gauge	1/10
Pile Thickness	3.5mm +/- 0.5mm
Total Thickness	6.5mm +/- 0.5mm
Tile Size	25cm x 100cm
Area of Use	Commercial – Heavy Duty
Lifetime Antimicrobial	Intersept®
Soil/Stain Protection	Protekt <sup>2</sup> ®
Total Recycled Content	GlasBac® 65% to 70% recycled content GlasBac®RE 80% to 85% recycled content
Installation Methods	Ashlar, Herringbone



Ashlar



Herringbone

B702™

Style Code	7432 Pattern 000
Product Definition	Tufted Textured Loop
Yarn/Fibre	100% Non-virgin Type 6 Nylon
Colour System	100% Solution Dyed
Machine Gauge	1/10
Pile Thickness	3.0mm +/- 0.5mm
Total Thickness	6.0mm +/- 0.5mm
Tile Size	25cm x 100cm
Area of Use	Commercial – Heavy Duty
Lifetime Antimicrobial	Intersept®
Soil/Stain Protection	Protekt <sup>2</sup> ®
Total Recycled Content	GlasBac® 65% to 70% recycled content GlasBac®RE 80% to 85% recycled content
Installation Methods	Ashlar, Herringbone



Ashlar



Herringbone

B703™

Style Code	7434 Pattern 000
Product Definition	Tufted Cut Pile
Yarn/Fibre	100% Non-virgin Type 6 Nylon
Colour System	100% Solution Dyed
Machine Gauge	5/64
Pile Thickness	1.5mm +/- 0.5mm
Total Thickness	4.5mm +/- 0.5mm
Tile Size	25cm x 100cm
Area of Use	Commercial – Heavy Duty
Lifetime Antimicrobial	Intersept®
Soil/Stain Protection	Protekt <sup>2</sup> ®
Total Recycled Content	GlasBac® 65% to 70% recycled content GlasBac®RE 80% to 85% recycled content
Installation Methods	Ashlar, Herringbone



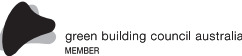
Ashlar



Herringbone

Production specifications are subject to normal manufacturing tolerances and may be changed without notice. Slight variation in colour among different production lots are normal and should be considered in the overall installation plan. Products covered by manufacturer's written warranty only. All other warranties, including without limitation any implied warranties of merchantability or fitness for particular purpose, are hereby disclaimed. Contact your representative for written warranty information. Recycled content calculations are based on historical averages by total weight of the product for backings. Yarn/Fibre recycled content calculation excludes backing. We update our recycled content information and other environmental data regularly to reflect changes and advancements in our technology.

\*Cool Carpet is not a standard option in Australia and New Zealand.



CoolCarpet™

Intersept®